



## ***VX150/VX150D Instruction Manual***

# **Quick Start Guide**

For Gauge Hole Receivers

Not all features listed in this QSG  
are available on all models.

---

### **THIS PACKAGE CONTAINS**

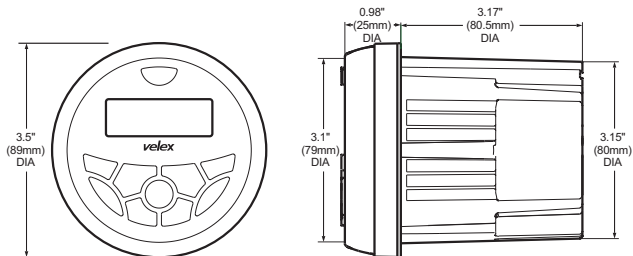
|                                    |     |
|------------------------------------|-----|
| Marine Media Player with Bluetooth | x 1 |
| U mounting bracket (Pre-installed) | x 1 |
| Screw Posts (Pre-installed)        | x 2 |
| Hex Nuts (Pre-installed)           | x 2 |
| User Manual                        | x 1 |

# Mounting & Wiring

Please read entire manual before installation.

## Before You Start

Disconnect negative battery terminal. Consult a qualified technician for instruction. Avoid installing the unit where it would be subject to high temperatures, such as from direct sunlight, or where it would be subject to dust, dirt or excessive vibration.



## Getting Started

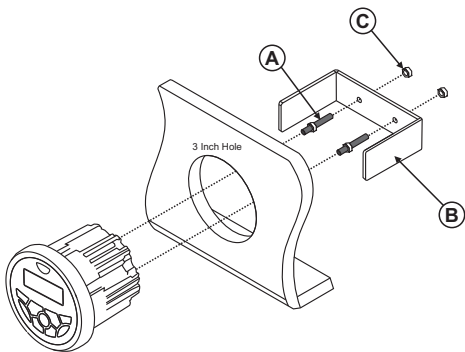
Once a suitable location has been decided, drill the hole and secure the stereo using the metal mounting bracket.

| Color        | Connection               |
|--------------|--------------------------|
| Red          | 12V Ignition / Accessory |
| Yellow       | Battery                  |
| Black        | Ground                   |
| Grey         | Right Front (+)          |
| Grey/Black   | Right Front(-)           |
| White        | Left Front (+)           |
| White/Black  | Left Front (-)           |
| Violet       | Right Rear(+)            |
| Violet/Black | Right Rear(-)            |
| Green        | Left Rear(+)             |
| Green/Black  | Left Rear(-)             |

**Tip:** When a suitable ground wire is not present in the vehicle wiring harness. Connect the black ground wire to the vehicle chassis.

**Fuse:** When replacing the fuse, make sure new fuse is the correct type and amperage. Using an incorrect fuse could damage the radio.

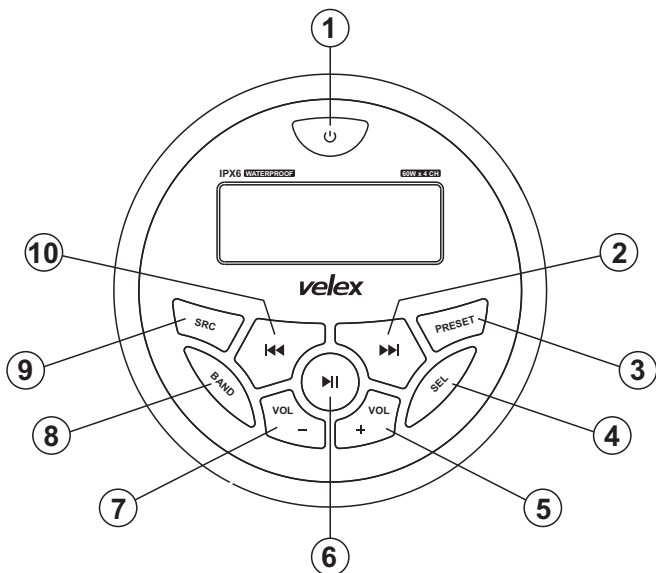
# Installation



## Mounting the Radio

1. Choose a mounting location on the dash board or instrument panel that will allow room behind to run radio cables to the power source. Consider how you will use the AUX IN, LINE OUT and USB connectors and route the appropriate extension cables to an accessible area.
2. Cut a hole (Diameter: 80mm/3.15 inch) in the dash board using the template provided on page 8. At least 3.5 inch depth is needed to mount the radio.  
**IMPORTANT! Do not mount this unit where it can be submerged in water.**
3. Attach the included screw posts (A) to the back of the radio.
4. Place the radio in front of the dashboard opening so the wiring can be brought through the opening.
5. After completing the wiring connections (page 2), turn the radio on to confirm operation (vehicle accessory switch must be on). If the radio does not operate. Recheck all wiring until the problem is corrected. Once proper operation is achieved, turn the accessory switch off and proceed with final mounting of the radio. Refer to the wiring diagram.  
NOTE: Before final installation, test the wiring connections to make sure the unit is connected properly and the system works.
6. Insert the radio into the mounting hole.
7. Place the 'U' bracket (B) over the screw posts and secure the radio to the dash using the included hex nuts (C).

## Control Locations - Receiver



**1** Power

**2** Tune Up/Next Track

**3** PRESET

**4** Select

**5** Volume Up

**6** Play/Pause

**7** Volume Down

**8** Band

**9** Source

**10** Tune Down/Previous Track

## General Operation

Power on/off -- Press the ' ⏻ ' button to turn the unit on. Short press ' ⏻ ' again to turn the unit off.

Brightness -- Press ' ⏻ ' to adjust the back light brightness ( High / Medium / Off).

Changing Modes -- Press SRC to select between AM/FM, USB, Auxiliary and Bluetooth Music. Modes of operation are shown in the display.

Volume -- Adjust volume using volume up/down key.

Mute -- Press '>||' to silence the audio. Press '>||' again to resume listening at previous selected volume.

Auxiliary Inputs Insert a 3.5mm connector in the AUX port, the other end of 3.5mm connector to the headphone output of an audio device (3.5 mm audio cable sold separately ).

## Audio setting



Short press 'SEL' to enter into AUDIO SETTING



Navigate between XBASS/ BASS / TREBLE / BALANCE / FADER



Press to select between EQ USER / JAZZ / POP / CLASS / ROCK

## System setting



Press and hold 'SEL' to enter into SYSTEM SETTING

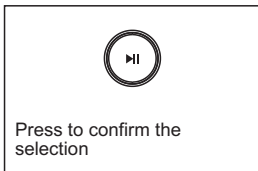
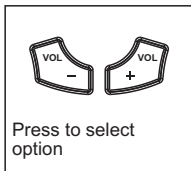
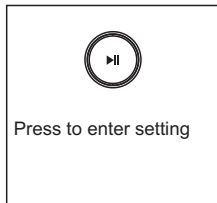
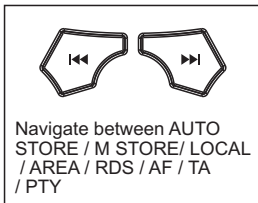
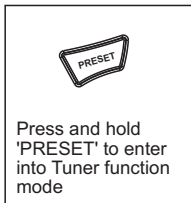


Navigate between BEEP / RESET / ABOUT / TIME

# AM/FM Tuner Operation

1. Press the SRC button to select TUNER
2. Press >|| button to MUTE, press again to UNMUTE
3. To manual adjust frequency press >>| or |<<
4. Press the PRESET button to recall PRESETS 1-6
5. Press BAND to switch between FM1, FM2, FM3, MW1, MW2, WB;

## Tuner Function Setting



**A – STORE:** Automatic search the strong radio stations and store them into PRESET.

**M- STORE:** Manual Store the Radio Station, tune to the favorite station, activate the M-STORE, the PRESET number will flashing on the LCD display, use the VOL+/VOL- button to adjust to your desired PRESET number ( P1 - P18 ), then press >|| button to manually save the station.

**LOCAL** - ON/OFF.

**AREA** - Select between EUROPE / AUSTRALIA / USA frequency.

**RDS** - ON/OFF; AF / TA / PTY – ON/OFF.

## USB Operation (MP3/WMA)

Playing MP3/WMA Files To play MP3/WMA files, insert a USB device (not supplied) containing MP3/WMA files.

**Track Select** - Press >> to skip to the beginning of the next track.  
- Press << to return to the beginning of the previous track. Press and

### Pause

Press >|| button to temporarily stop playback.

Press >|| button again to resume playback.

Fast forward and reverse

Press and hold >> or << to fast forward or reverse a track.

## Bluetooth Operation

Preparation-Before using a Bluetooth device, it must be paired and connected. Ensure that Bluetooth is activated on your device before beginning the pairing process.

Pairing

**To pair your smart phone to VX150, press the SRC button to select 'BT AUDIO' mode, the 'Bluetooth' icon will be flashing on the LCD screen.**

Activate the Bluetooth on your smartphone to search for new devices. Connect with the device name ' VX150 ' when found. (If pin number is required by smart phone, please enter '0000'). Once pairing is successful, 'Bluetooth' icon will be displayed on the screen.

Press >> or << button to select next or previous track.

Press >|| button to pause or continue play back.

While BT mode, Long press 'Band' button to force disconnect the current Bluetooth connection.

# DAB Operation (available for VX150D only)

Note: DAB+ ( Digital Audio Broadcasting) is only available for some European countries and Australia where has the Digital Radio Broadcasting.

Press SRC button to switch to DAB+ mode, VX150D will automatically scan for local digital stations. This process may take a few seconds depending on the numbers of available stations. As DAB+ stations are found, they will be automatically stored into the DAB+ band memories. Once scanning is complete, VX150D will begin playing the station stored in the first memory location. And the station will be displayed on the screen.

## Tuning DAB+ stations

Press |<< or >>| button to tune to previous / next DAB+ station.

**A – STORE:** Long press BAND button for automatically scan and save the stations.

## Specifications

### General

Power supply requirements: DC 12V Negative Ground

Load impedance: 4-8 Ohms/channel

Maximum output power: 40W x 4 (CH)

Operate temperature: -10-50°C

FM Tuner: Tuning range: 87.9MHz-107.9MHz (USA)

87.5MHz-108MHz (EUR)

AM Tuner: Tuning range: 530KHz-1710 KHz (USA)

522KHz-1620 KHz (EUR)

**DAB+ (VX150D only)** Tuning Range: BAND III 174-240 Mhz

### USB playback

Signal to Noise Ratio: 55dB

Frequency Response: 50Hz- 20KHz

A/D Conversion Filter: 16BIT

USB Storage Capacity: 16GB Max

### Bluetooth

Version: 3.0

\*Note: Specification may change without notice.



## Trouble Shooting

| ISSUE                            | OPTIONS   |
|----------------------------------|---|
| Unit will not turn on (no power) | Cause: Yellow/red wire not connected or incorrect voltage<br>Action: Check connections for proper voltage (11-16V DC)   |
|                                  | Cause: Black wire not connected<br>Action: Check connection to ground   |
|                                  | Cause: Fuse blown<br>Action: Replace the fuse   |
| Unit has power (but no sound)    | Cause: Speaker wire not connected<br>Action: Check connections at speakers  |
|                                  | Cause: One or more speaker wires touching each other or touching chassis ground<br>Action: Insulate all bare speaker wires from each other and chassis ground |
| Unit blows fuses                 | Cause: Yellow/red wire touching chassis ground<br>Action: Check for pinched wire  |
|                                  | Cause: Speaker wires touching chassis ground<br>Action: Check for pinched wire  |
|                                  | Cause: Incorrect fuse rating<br>Action: Use fuse with correct rating  |

# Cutting Template

Outer edge of stereo  
(Push out)

Mounting hole  
(Push out)

